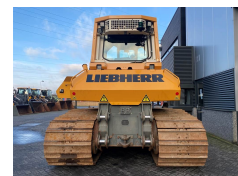
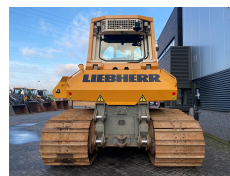


Liebherr PR 734 LGP



Brand

Model

Year of manufacture

Internal stock No.

Hours of use

Working width

Undercarriage

Blade type

Gross weight

Cabin type

Engine

Engine output

Track width

Transmission

Original colour

Tyre brand

Gebruikte machines

160_Bulldozers

Liebherr

PR 734 LGP

2011

6225

9450 h

3.95 cm

Rupsaandrijving

Rechte schuif

22800 kg

Gesloten cabine

LIEBHERR D936 L A6

235 pk

915.00 cm

Hydrostatic (variable)

Yes

LGP

Equipped for	Array
Delivery terms	Array
Certificates	EPA, CE
	Array

LIEBHERR PR 734 LGP Bulldozer Straight Blade with Tilt Year of manufacture: 2011 Hours: 9.450
Weight: 22.800 KG Engine: LIEBHERR D936 L A6 Emission: Stage IIIA / TIER3 Blade: 3.995 mm
Pads: 914 mm U/C: 90% remaining - Rearview Camera - Hydr. Ripper Valve (AUX) - Airco (A/C) -
EPA en CE Marked Undercarriage in very good condition Almost new