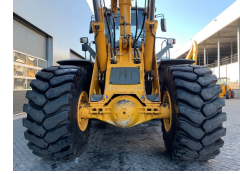


Liebherr L 586 2plus2



Brand

Model

Year of manufacture

Internal stock No.

Hours of use

Gross weight

Registration number

Body type

Cabin type

Engine

Engine output

Top speed

Transport dimensions (LxWxH)

Original colour

Tyre brand

Front tyres / undercarriage remaining

Gebruikte machines

110_Wielladers

Liebherr

L 586 2plus2

2011

4594

14000 h

36500 kg

Reserved/Reserviert

Knikgestuurd

Gesloten cabine

Liebherr D936L A6

333 pk

40.00 km/h

9,4 x 3,3 x 3,74 m

Ja / Yes

Michelin 29,5xR25

95 %

Rear tyres remaining	95 %
Delivery terms	Array
Certificates	Array
	Array

LIEBHERR L586 2plus2 Wheelloader Absolute Excellent condition Year of manufacture: 2011 - Payload system - Hydr. Coupler (VOLVO) - 3th Hydr. Function (AUX) - Auto Lubrication - MICHELIN L5 Tires 95% Attachments on request available