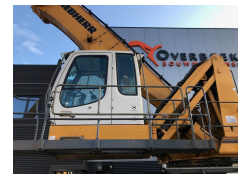


Liebherr A 944 C 2010 Litronic + Polypt



Brand

Model

Year of manufacture

Internal stock No.

Hours of use

Gross weight

Cabin type

Engine output

Transport dimensions (LxWxH)

Tyre size

Original colour

Carrier type

Dipper / stick length

Engine

Tyre brand

Delivery terms

Gebruikte machines

132_Overslagkranen

Liebherr

A 944 C 2010 Litronic + Polypt

2010

4365

11632 h

60000 kg

Elevating

258 pk

13,55 x 3,5 x 4,22 m

20.5 x 25"

Ja / Yes

Wiel aandrijving

880.00 cm

Liebherr D936L

Solid Tires

Array

Certificates

Array

Array

LIEBHERR A944C HD Material Handler Year 2010, with only 11.600 hours Ex- German Machine. Solid Tires 20.5 x 25" Auto Lubrication, Hi-Rise Cab, 4x Outriggers, A/C Industrial Boom and stick 18,5 Mtr Reach, With Original LIEBHERR 5-tines Polyp-grapple Very good technical Condition